

Technical Information

Micro, Tec, Euro & /Mini Trio Jet		Hole size	Flow	Maxi Jet	
Hole Size	28 mm			Hole Size	60mm
Jet Face Diameter	42 mm			Jet Face Diameter	84mm
Flow Rate At 60kpa		16 Lpm		Flow Rate At 60kpa	35 Lpm
Flow Rate At 90kpa		20 Lpm		Flow Rate At 90kpa	42 Lpm
Mini Jet™				Extreme Spa Pool Jet	Lock Nut Torque 9Nm
Hole Size	25mm			Hole Size	54mm
Jet Face Diameter	41mm			Jet Face Diameter	74mm
Flow Rate At 60kpa		16 Lpm		Flow Rate At 60kpa	38Lpm
Flow Rate At 90kpa		20 Lpm		Flow Rate At 90kpa	46Lpm
Macro Jet™				Extreme Twin Spin	Lock Nut Torque 9Nm
Hole Size	25mm			Hole Size	54mm
Jet Face Diameter	55mm			Jet Face Diameter	74mm
Flow Rate At 60kpa		16 Lpm		Flow Rate At 60kpa	37 Lpm
Flow Rate At 90kpa		20 Lpm		Flow Rate At 90kpa	45 Lpm
Mi-Tee Jet™				Excess 84 Spa Pool Jet	Lock Nut Torque 9Nm
Hole Size	44 Mm			Hole Size	60mm
Jet Face Diameter	66 Mm			Jet Face Diameter	84mm
Flow Rate At 60kpa		28 Lpm		Flow Rate At 60kpa	38Lpm
Flow Rate At 90kpa		34 Lpm		Flow Rate At 90kpa	46Lpm
Mi-Tee Pulse Jet				Excess 100 Spa Pool Jet	Lock Nut Torque 9Nm
Flow Rate At 60kpa		19 Lpm		Hole Size	60mm
Flow Rate At 90kpa		23 Lpm		Jet Face Diameter	100mm
JetEx Jet™				Flow Rate At 60kpa	38 Lpm
Hole Size	44 Mm			Flow Rate At 90kpa	46 Lpm
Jet Face Diameter	70 Mm			Excess 84 Twin Spin	Lock Nut Torque 9Nm
Flow Rate At 60kpa		28 Lpm		Hole Size	60mm
Flow Rate At 90kpa		34 Lpm		Jet Face Diameter	84mm
JetEx Pulse Jet				Flow Rate At 60kpa	37 Lpm
Flow Rate At 60kpa		19 Lpm		Flow Rate At 90kpa	45 Lpm
Flow Rate At 90kpa		23 Lpm		Excess 100 Twin Spin	Lock Nut Torque 9Nm
Eyeris Jet				Hole Size	60mm
Hole Size	44 Mm			Jet Face Diameter	100mm
Jet Face Diameter	72 Mm			Flow Rate At 60kpa	37 Lpm
Flow Rate At 60kpa		28 Lpm		Flow Rate At 90kpa	45 Lpm
Flow Rate At 90kpa		34 Lpm		Exhilarator Spa Pool Jet	Lock Nut Torque 9Nm
Eyeris Pulse Jet				Hole Size	95mm
Flow Rate At 60kpa		19 Lpm		Jet Face Diameter	126mm
Flow Rate At 90kpa		23 Lpm		Flow Rate At 60kpa	41 Lpm
Trio Jet™				Flow Rate At 90kpa	50 Lpm
Hole Size	44 Mm			Exhilarator 5 Star Pulse	Lock Nut Torque 9Nm
Jet Face Diameter	72 Mm			Hole Size	95mm
Flow Rate At 60kpa		28 Lpm		Jet Face Diameter	126mm
Flow Rate At 90kpa		34 Lpm		Flow Rate At 60kpa	44 Lpm
Trio Pulse Jet				Flow Rate At 90kpa	53 Lpm
Flow Rate At 60kpa		19 Lpm		Exhilarator Twin Spin	Lock Nut Torque 9Nm
Flow Rate At 90kpa		23 Lpm		Hole Size	95mm
				Jet Face Diameter	126mm
				Flow Rate At 60kpa	41 Lpm

TECHNICAL CATALOGUE MARCH 2009

ORDERS: FAX 03-9775-0881, PHONE 03-9775-0882 OR EMAIL sales@edgetecsys.com.au



Edgetec Systems Pty Ltd A.B.N. 66 071 216 423
13 Lieber Grove, Carrum Downs, 3201
Tel (03) 9775 0882 Fax (03) 9775 0881

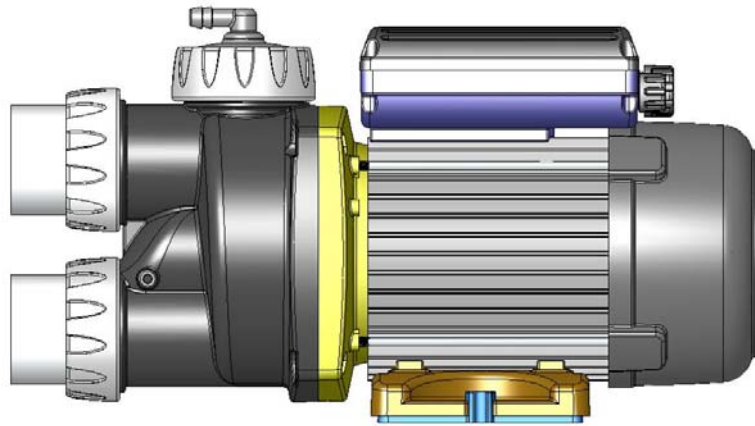
Technical Information

			Flow Rate At 90kpa		50 Lpm
--	--	--	--------------------	--	--------

Force Ten	Lock Nut Torque	9Nm	Air Button		
Hole Size	108mm		Hole Size-Air Button	35mm	
Jet Face Diameter	150mm		ReActive Air Control		
Flow Rate At 60kpa SVT 30mm		316 Lpm	Hole Size-(smooth & scalloped)	25mm	
Flow Rate At 90kpa SVT 30mm		384 Lpm	Designer Air Control		
Flow Rate At 60kpa 25mm		332 Lpm	Hole Size	44mm	
Flow Rate At 90kpa 25mm		390 Lpm	Hi-Flow Air Control		
Flow Rate At 60kpa SVT 38mm		570 Lpm	Hole Size	29mm	
Flow Rate At 60kpa 38mm		690 Lpm	Spa Drain, Niche & Floor Drain		
Ultra Blaster Jet			Hole Size Spa Drain	35mm	
Hole Size	152mm		Hole Size Floor Drain	44mm	
Jet Face Diameter	193mm		Hole Size Niche	89mm	
Flow Rate At 60kpa		252 Lpm	FX Lights		
Flow Rate At 90kpa		296 Lpm	3.5" Front Service	65mm	
FX Spa Jet			3.5" Back Service	65mm	
Hole Size	38mm		5" back Service	100mm	
Jet Face Diameter	53mm		Enhance Air Injector	Lock Nut Torque	1.4Nm
Flow Rate At 60kpa		17Lpm	Hole Size	16mm	
Flow Rate At 90kpa		21Lpm	O² Air Injector	Lock Nut Torque	1.4Nm
Spa Suction	Lock Nut Torque	9Nm	Hole size	17.4mm	
Hole Size	60mm		Aroma Therapy		
Flow Rate		*450 Lpm	Hole Size	40mm	
SLP Spa Suction	Lock Nut Torque	9Nm	Diverter Valve		
Hole Size	60mm		Hole Size	80mm	
Flow Rate		*220 Lpm	Spa Bath Mood Light		
200 US GPM Spa Suction			Hole Size	54mm	
Hole Size	89mm		Micro Spa Drain		
Flow Rate		200 GPM	Hole Size	28mm	
			Spa Bath Over Flow		
			Hole Size	28mm	

- Flow rates are in accordance with UL Standards

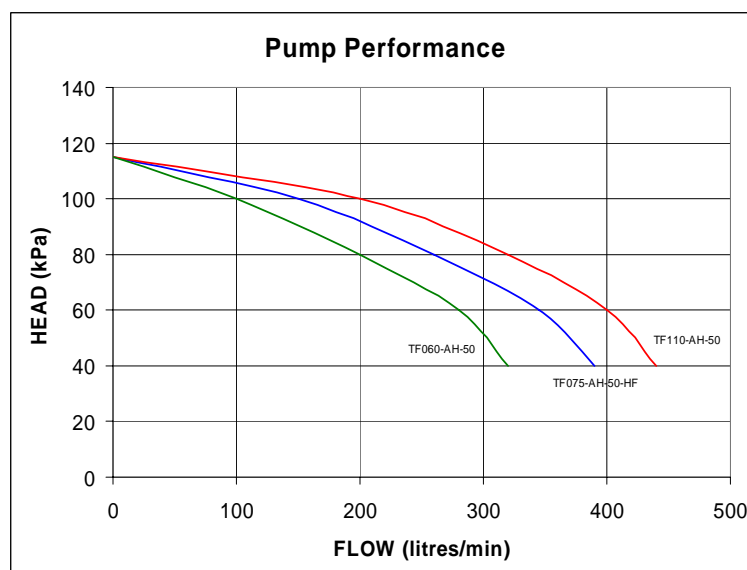
Pump dimensions



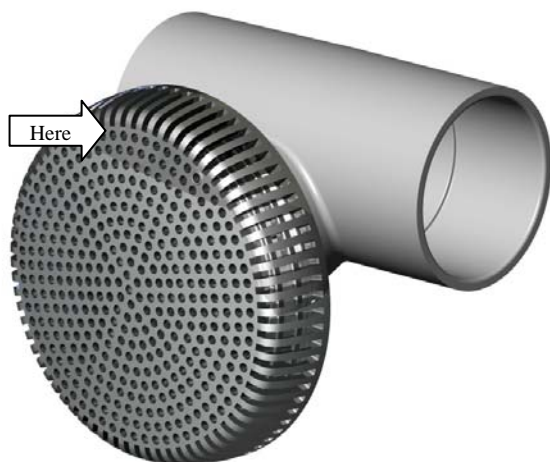
Pump Model	Hp	Power (watts)	Width (mm)	Height (mm)	Length (mm)
TF060	.8	600	148	198	384
TF075	1	750	148	198	384
TF110	1.5	1100	148	198	406

Pump Model	Supply Voltage	Power (watts)	Heater watts	Current (amps)	Max Head (meters)
TF060-AH-50	230-240	600	0	3.7	11
TF075-AH-50-HF	230-240	750	0	4.4	11
TF110-AH-50	230-240	1100	0	5.4	11
TF060-XH, ST, SK-50	230-240	600	700	6.8	11
TF075-XH, ST, SK-50-HF	230-240	750	700	7.5	11
TF110-XH, ST, SK-50	230-240	1100	700	8.6	11

TriFlo Performance Table

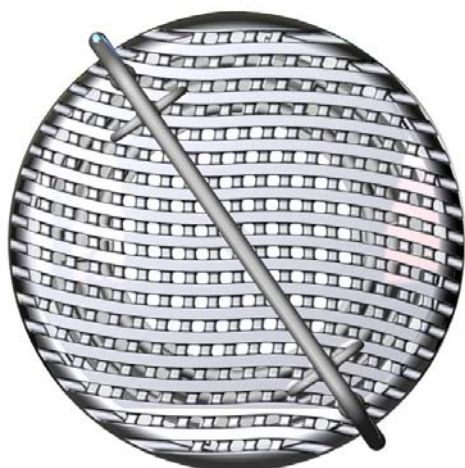


Technical Information



Removal & Installation of the "Flexi Flange" Spa Suction Cover

- Run your finger around the outside of the small holes until you find the hole that is raised.
- Insert a small screw driver or glider clip into the hole and press the tab down. Rotate the cover in an anti clockwise direction, once the cover has started to turn remove your screw driver and keep rotating the cover until it releases.
- To replace the cover look at the under side of the cover for the larger of the three tabs, locate this tab in the larger opening on the suction nut so that all three tabs are in their correct position. Turn the suction cover in a clockwise direction until you hear the cover "click" into place. The spa is now ready to use.



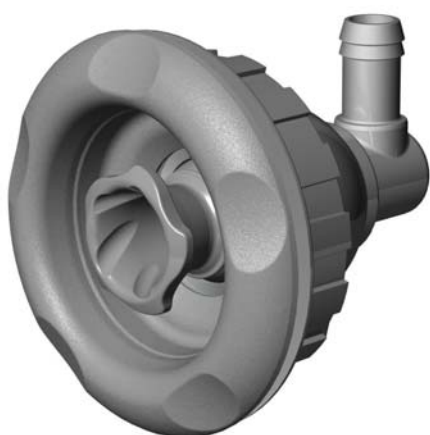
Removal & Installation of the "SLP" Spa Suction Cover

- To remove the cover place the SLP suction tool in the two holes that are identified by the raised ribbed sections on the suction cover (1st hole second row & last hole 17th row or second last row). Rotate the tool in an anti clockwise direction until the cover separates from the suction lock nut.
- To replace the cover or to install the suction cover, place the SLP suction tool into the two holes identified by the raised ribbed sections of the suction cover. (1st hole second row & last hole 17th row or second last row). Rotate the cover in a clockwise direction until the cover tightens. Remove the SLP suction tool and align the cover to the correct position. The spa is now ready to use.



Removal of Mi Tee, JetEx, Eyeris, Trio & Maxi Jets

The new Easy-Out function will allow jets to be removed and changed without the use of a tool. To remove the jet with the Easy-Out function, simply rotate the jet face pass the off position (Clockwise). The Jet face will hesitate slightly and then pop out.



Removal of Exhilarator, Excess & Extreme Spa Pool Jets

To remove the spa jets, simply turn the spa jet in an anti-clockwise direction to the fully open position. Then turn it a little more and pull the jet towards you, your jet will now come out of the jet body.